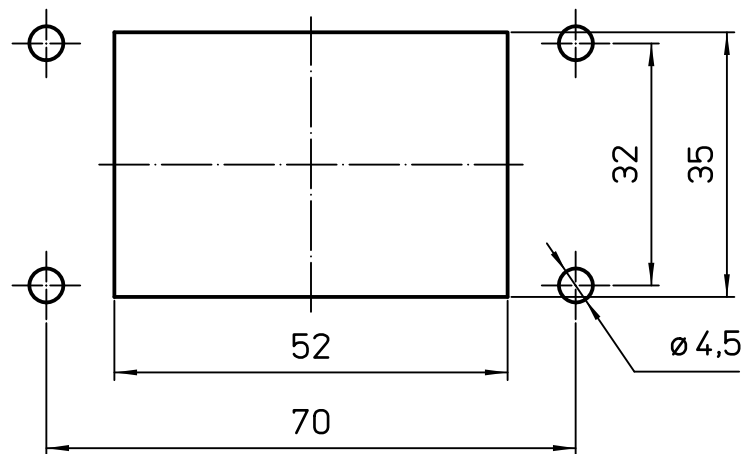
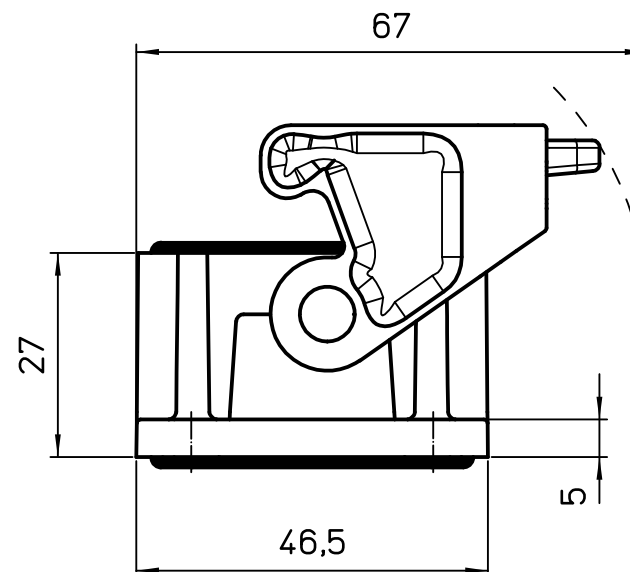
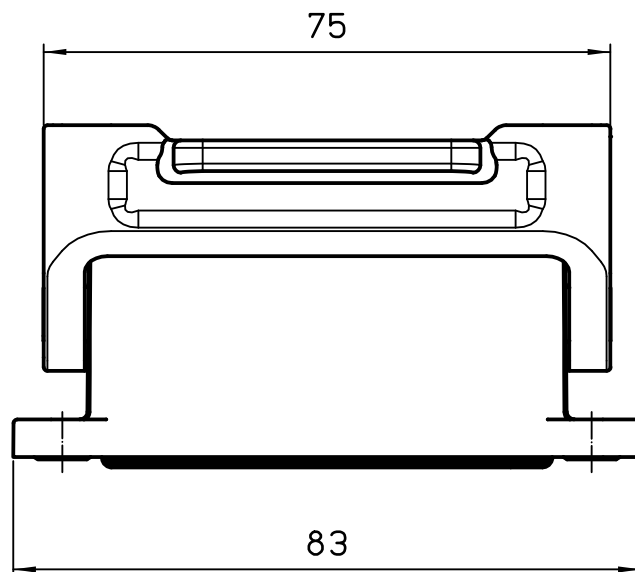
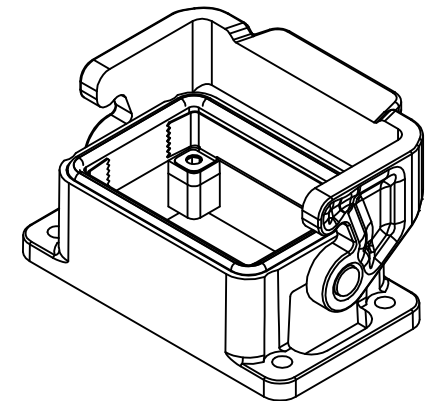


Diritti riservati

All rights reserved



Panel cut-out



	Dimensions in mm
Original Size A4	
Date 06/11/23	
Sign. G. Renna	

Simplified representation with dimensions without tolerance

THIW 06 LB  
Insulating bulkhead mounting housing size "44.27"  
with integrated PE jumpers - T-Type/W

Scale  
1:1

